



# LANDSLIDE ADVISORY



(25th April, 2024 to 29th April, 2024)

## ANTICIPATED LOSSES

### Very High Risk Zones

Towns at Risk	Infrastructure at Risk	Roads at Risk (Km)	Population
<b>18</b>	<b>12,319</b>	<b>1014.95</b> Km	<b>7.1</b> Mn

### High Risk Zones

Towns at Risk	Infrastructure at Risk	Roads at Risk (Km)	Population
<b>19</b>	<b>16,323</b>	<b>1431.99</b> Km	<b>7.3</b> Mn

### Medium Risk Zones

Towns at Risk	Infrastructure at Risk	Roads at Risk (Km)	Population
<b>15</b>	<b>11,043</b>	<b>1424.71</b> Km	<b>6.1</b> Mn

### Low Risk Zones

Towns at Risk	Infrastructure at Risk	Roads at Risk (Km)	Population
<b>23</b>	<b>15,555</b>	<b>1955.12</b> Km	<b>8.6</b> Mn

## LIKELY IMPACT AREAS

### Khyber Pakhtunkhwa

Chitral	Swat	Shangla
Battagram	Mansehra	Khyber
Torghar	Kohistan	Abbottabad

### Gilgit Baltistan

Hunza	Skardu	Ghanche
Gilgit	Nagar	Diamir

### AJ & K

Muzaffarabad	Haveli	Bhattian
--------------	--------	----------

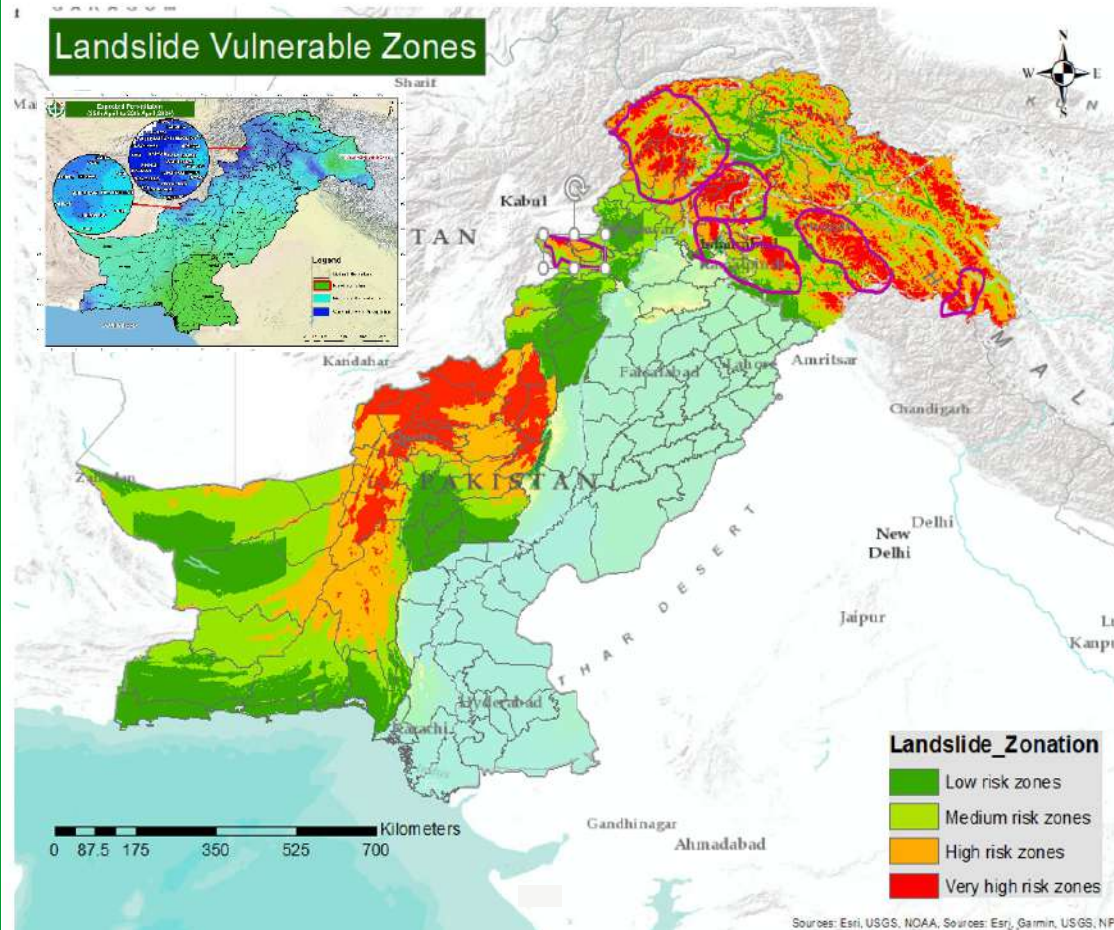
### Balochistan

Sherani	Zhob	Musakhel
Killah Saifullah	Pishin	Ziarat
Kalat	Quetta	Mastung

## IMMEDIATE ACTION

- It is advised to be watchful of Landslides, Slope failures, Rock falls and Ground Subsidence in high vulnerable zones (encircled) in map, avoid unnecessary travel.
- PDMA, Rescue Services, Armed Forces and leading NGOs / CSOs to ensure availability of personnel / equipment in the indicated areas and be on stand-by for rapid response in case of any forecasted adverse weather systems.

## Landslide Vulnerable Zones



## FORECASTED IMPACT

- Reference to National Disaster Management Authority (NDMA), Dated 25-29 April, 2024, Heavy rainfall is expected in Gilgit-Baltistan, Khyber Pakhtunkhwa, Kashmir and Gwadar from 25-29 April, 2024.
- As heavy to moderate rain may persist for some days, localized landslides may occur in very high to moderate risk zones (shown through Probable Landslide Areas).
- Karakoram Highway along Hunza (approx 83kms), at Nagar (approx 49kms), at Gilgit (approx 42kms), at Diamir (approx 90kms), at Kohistan (approx 127kms), at Battagram (approx 44kms), at Mansehra (approx 44.6 kms), at Abbottabad (approx 32.9 kms) is at high risk of landslide.
- It is advised to watchful of landslide, Slope failure, Rock falls and Groundsubsidence in high vulnerable zones in colored map, avoid unnecessary travel.
- Stay updated on weather & roads condition through social media and local news.